

# GMC K JIMMY

4-WD FULL-SIZE GASOLINE AND DIESEL MODELS

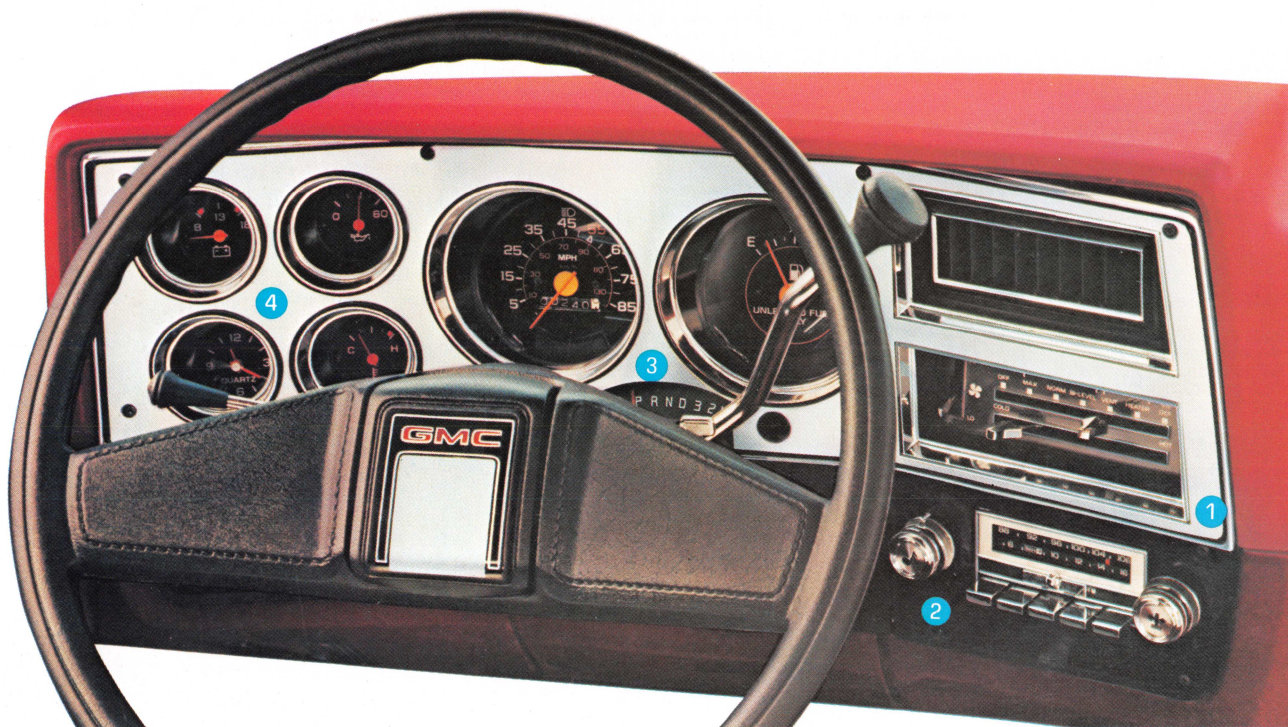


TOUGH QUALITY TRUCKS WITH VALUE



MARK OF EXCELLENCE





#### AVAILABLE ACCESSORIES

☐ Air conditioning ☐ Gages: voltmeter, temperature, oil with or without quartz electric clock ☐ Cigarette lighter with lighted ashtray ☐ Intermittent windshield wipers ☐ Electric tailgate window ☐ Delco Radios: AM, AM/FM, AM/FM stereo, AM/FM stereo with cassette tape player, rear auxiliary speaker ☐ Headlamp warning buzzer

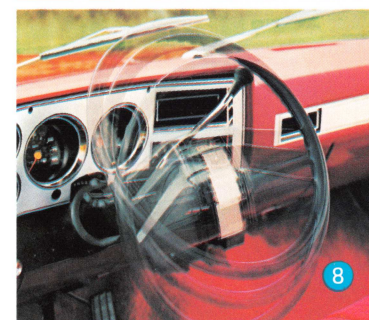
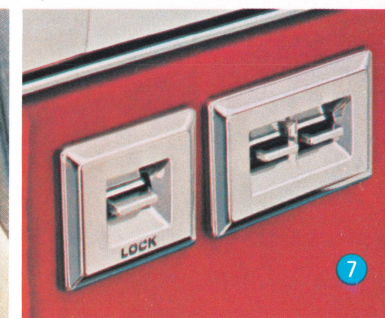
#### AVAILABLE APPEARANCE EQUIPMENT

☐ Interior headliner and moldings for standard models ☐ Color-keyed front floor mats ☐ Deluxe front appearance ☐ Deluxe front/rear bumpers ☐ Chromed front bumper guards ☐ Deep-tinted glass (with or without light tinted rear window) ☐ Body side molding packages ☐ Bright metal wheel covers ☐ Door edge guards

#### AVAILABLE CHASSIS AND HEAVY-DUTY EQUIPMENT

☐ Air cleaner precleaner (now available for all engines) ☐ Cold Climate package ☐ Heavy-duty front/rear shock absorbers ☐ HD front springs ☐ 66-amp. Delcotron generator ☐ Extra-capacity fuel tank ☐ Fuel tank stone shield (includes transfer case shield) ☐ HD battery ☐ Auxiliary battery ☐ Engine oil cooler (gas only) ☐ New engine block heater (gas only) ☐ HD radiator (gas only) ☐ HD transmission oil cooler ☐ Front tow hooks ☐ Front quad shocks ☐ Deadweight trailer hitch ☐ Trailer wiring harness ☐ Hitch platform ☐ HD Trailering Special equipment ☐ Locking differential rear axle ☐ Halogen headlamps. Ask your dealer about available equipment not listed here.

1. Air conditioning in combination with heater and outside air feature
2. Delco radios
3. Automatic transmission
4. Gages
5. Sliding side window glass
6. New electronic type automatic speed control
7. Power windows and power door locks are available separately or as a package
8. Comfortilt steering wheel
9. Front bumper guards



#### A WORD ABOUT ASSEMBLY, COMPONENTS, AND OPTIONAL EQUIPMENT IN THESE GMC PRODUCTS

The GMC Jimmys described in this brochure are assembled at facilities of General Motors Corporation operated by Truck & Bus Manufacturing Division, and GM Assembly Division. These vehicles incorporate thousands of different components produced by various divisions of General Motors and by various suppliers to General Motors. From time to time during the manufacturing process, it may be necessary, in order to meet public demand for particular vehicles or equipment, or to meet federally mandated emissions, safety, and fuel economy requirements, or for other reasons, to produce GMC products with different components or differently sourced components than initially scheduled. All such

components have been approved for use in GMC products and will provide the quality performance associated with the GMC name.

With respect to extra-cost optional equipment, make certain you specify the type of equipment you desire on your vehicle when ordering it from your dealer. Some options may be unavailable when your truck is built. Your dealer receives advice regarding the current availability of options. You may ask the dealer for this information. GM also requests the dealer to advise you if an option you ordered is unavailable. We suggest that you verify that your truck includes the optional equipment you ordered, or if there are changes that they are acceptable to you. These vehicles are also available under the nameplate Chevrolet Blazer.



# Class and Comfort

Americans demand more than toughness in a 4-wheel drive—and GMC Jimmy has more of what you want. Our standard Sierra Jimmy has so many features usually offered only with uplevel trim that Jimmy comes in only two trims—Sierra, and Sierra Classic.

For '83 Jimmy's sporting new front-end treatments—new lamp bezels and grille for standard models are painted Light Argent and surrounded with new bright outline moldings. Parking lamps are located below single rectangular headlamps. With available deluxe front appearance (standard on Sierra Classic), the lamp bezels and grille are painted Light and Dark Argent. Parking lamps are placed behind the lower corners of the grille. Deluxe front end has dual rectangular headlamps.

## SIERRA, OUR COMFORTABLE, GOOD LOOKING STANDARD TRIM

Interior includes two foam-padded high-back front bucket seats in grained standard vinyl. If alternate available custom leather-grained vinyl is specified, a center console and color-keyed front floor carpeting are included (full-length floor carpeting is installed if available folding rear seat also is specified.) Both fabrics come in Blue or Almond. Color-keyed features include the padded instrument panel, plastic door trim panels with integral armrests, and dual padded sun visors. Embossed Black rubber mats cover the entire floor, except as noted above. Convenient inside hood-lock release and two door-activated dome lights are a part of the Sierra package. Power steering also is standard.

Outside, Sierra features chromed front and rear bumpers, bright right and left mirrors with adjustable heads, bright hub caps, single-note electric horn, electric two-speed windshield wipers, and identifying nameplates. Diesel models include a standup hood ornament and nameplates on fenders and tailgate with 6.2 LITRE DIESEL lettering. All body glass including the tailgate is tinted.

## SIERRA CLASSIC, OUR LUXURY TRIM

This available trim provides top-of-the-line features. The deluxe instrument panel has a new pewter-toned brushed aluminum finish for the instrument cluster bezel and for the appliques on the instrument panel pad, horn button and door trim panels. Gages replace warning lights for generator, oil pressure, and engine temperature. Also included are custom steering wheel, cigarette lighter and fiber optic illuminated ashtray, and visor mirror.

In '83 you can select available custom leather-grained vinyl or new custom cut-pile velour cloth for the front high-back bucket seats. Both come in the Sierra Classic interior colors: Almond, Blue, Carmine, or Gray. A center console with storage space and beverage pockets is included. Sierra Classic also features a Mystic-colored front headliner and color-keyed front floor carpeting. When the available folding rear seat is specified, full-length floor carpeting is installed.

Doors have full trim panels with padded armrests, map pockets and closing-assist straps. Rear compartment side-walls are trimmed, and carpet is added to the lower portion of doors and sidewalls.

Sierra Classic exterior has bright lower body side and rear moldings, bright wheel-opening moldings, and bright windshield and removable top window trim. Also included are two-note electric horn, bright tailgate applique, and deluxe front-end appearance with stacked dual rectangular headlamps.



Available Sierra rear seat



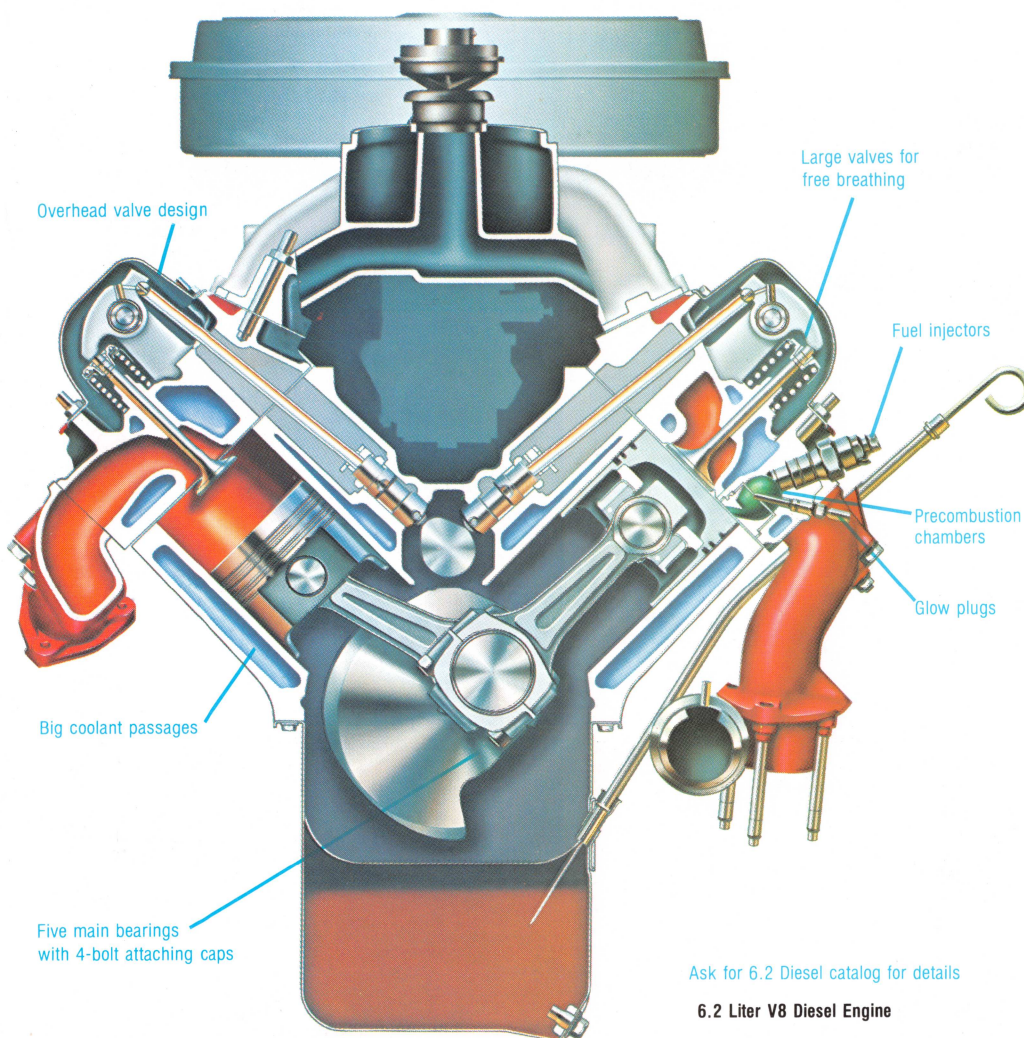
Sierra Classic luxury trim with cut-pile velour cloth. Shown with available equipment



Sierra trim with Blue grained vinyl. Shown with available equipment



# HIGH MILEAGE JIMMY . . . AVAILABLE 6.2 LITER DIESEL ENGINE



Ask for 6.2 Diesel catalog for details  
6.2 Liter V8 Diesel Engine

## IMPORTANT! A WORD ABOUT THIS CATALOG

We have tried to make this catalog as comprehensive and factual as possible and we hope you find it helpful. However, since the time of printing, some of the information you'll find here may have been updated. Also, some of the equipment shown or described throughout this catalog are available as factory-installed options, as dealer accessories, and as specialized equipment from various independent suppliers at extra cost. Your dealer has details and, before ordering, you should ask him to bring you up to date.

The right is reserved to make changes at any time, without notice, in prices, colors, materials, equipment, specifications and models. Check with your GMC dealer for complete information.

1983 EPA Estimates		Available 6.2L Diesel with Available 4-Spd Auto OD Transmission
50 States	EPA Est MPG	<b>19</b>
	Est Hwy	<b>27</b>

Use estimated MPG for comparison. Your mileage may differ depending on speed, distance, weather. Actual highway mileage lower.

## 6.2 LITER V8 DIESEL ENGINE

This rugged diesel engine, created specifically for truck use, is rated at 130 SAE net horsepower. It is naturally aspirated and features proven Ricardo Comet V precombustion chambers for impressive fuel combustion efficiency and emissions control.

Diesel offers the advantage of efficient fuel consumption and low maintenance — there are no points, spark plugs, coils, condenser, or carburetor to adjust or replace. Oil and oil filter changes are recommended every 5000 miles.

Included with the engine are a low-coolant sensor, polywrapped paper element air cleaner, fuel line heater, engine block heater, and a fuel tank water detection and drain system.

An available 4-speed automatic overdrive transmission is required with the 6.2 V8 diesel engine.

For '83 you can carry larger payloads with the new available 6,250-lb. GVWR.

## B3J DIESEL EQUIPMENT PACKAGE.

This available equipment is required for Jimmy with the 6.2 Liter V8 diesel engine. It consists of: hydraulic power brakes; 66-amp. generator; dual 550 CCA Delco Freedom batteries; engine oil cooler; heavy-duty radiator; dual exhaust system; additional insulation for sound control; instrument panel warning lights for Glow Plugs/Water-In-Fuel and Low Coolant; diesel identification on hood, fenders, tailgate; Diesel Fuel Only label at fuel filler door; and heavy-duty front springs.

## V8 GASOLINE ENGINES

The standard engine for the '83 Jimmy is a 5.0 Liter V8 gasoline with Electronic Spark Control. It has a high 9.2 to 1 compression ratio and a built-in electronic system that automatically retards the spark when a "knock" condition occurs. This engine is not available in California where a 5.7 Liter V8 is available.

A 4-speed automatic overdrive transmission is available with gasoline engines. The standard 4-speed manual transmission can be ordered for delivery after January 1983. Not available in California.

## A WORD ABOUT ENGINES

Some GMC Light Duty trucks are equipped with engines produced by other GMC divisions, subsidiaries, or affiliated companies worldwide. See your GMC Truck dealer for details.

	ALL STATES EXCEPT CALIFORNIA	CALIFORNIA ONLY	50 STATES
Displacement, Liter	5.0 Liter V8 W/ESC*	5.7 Liter V8*	6.2 Liter V8 Diesel**
Engine Ordering Code	LE9	LS9	LH6
Bore & Stroke, In	3.74 x 3.48	4.0 x 3.48	3.98 x 3.82
Compression Ratio	9.2:1	8.2:1	21.3:1
SAE Net HP @ RPM	160 @ 4400	165 @ 3800	130 @ 3600
SAE Net Torque Lb/Ft @ RPM	235 @ 2000	275 @ 1600	240 @ 2000

\*Produced by GM, Chevrolet Motor Division

\*\*Produced by GM, Detroit Diesel Allison Division

ESC = Electronic Spark Control



# GMC 4-WD JIMMY FULL SIZE AND TOUGH!

'83 GMC Jimmy knows what 4-wheelin's all about. Jimmy's a tiger in rough country, moving along tough terrain with power to spare from a big V8 gasoline or available 6.2 Liter V8 diesel engine. Back on the highway Jimmy purrs like a pussycat. Check out Jimmy!

**DOUBLE-WALL CONSTRUCTION** of hood, cowl, front fenders, doors, rear side panels, and tailgate. In '83 the hood inner panel is formed of Zincrometal for added protection from corrosion.

**ELECTRICAL SYSTEM** includes maintenance-free Delco Freedom battery (two on diesel models) which never requires the addition of water; and a Delcotron generator.

**FRONT SUSPENSION** includes leaf springs, stabilizer bar, and double-acting shock absorbers. There is an available Front Quad Shock package which includes four 25-mm front shocks and two 32-mm rear shocks.

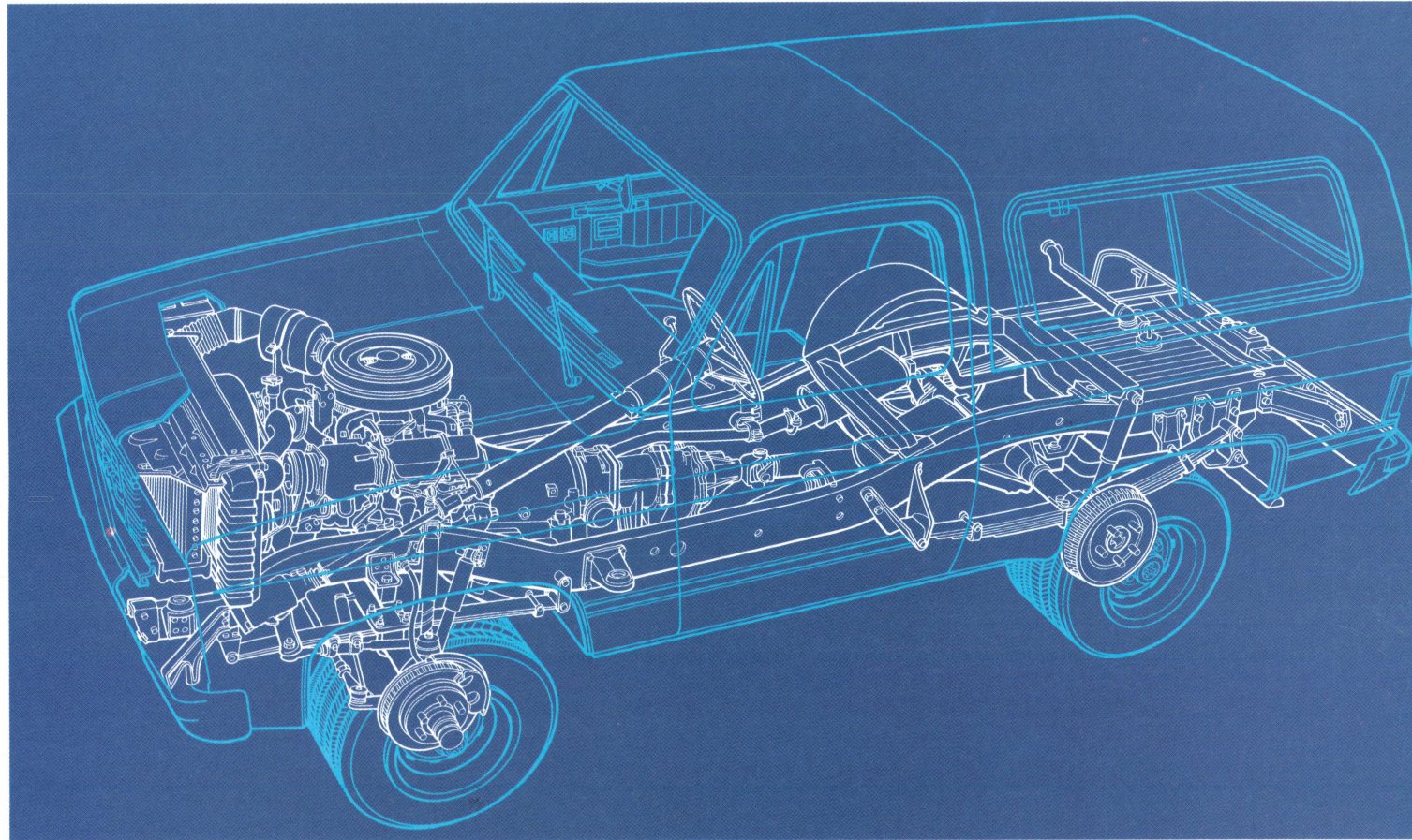
**RUGGED FRAME WITH DROP-CENTER DESIGN** provides low entry height with 7" ground clearance.

**COMPUTER-MATCHED POWER BRAKES** with front, low-drag disc brakes with audible wear sensors; finned rear drum brakes.

**REAR SUSPENSION** features two-stage, multileaf springs that grow progressively firmer as the load increases. Counter-angled shock absorbers help control brake and power hop. Axle is semi-floating type for low vehicle weight.

**NEW EXHAUST PIPE FASTENERS** Spring retention of exhaust pipe flanges to engine exhaust manifold permits a degree of flexibility, minimizes stress, and thus contributes to exhaust system life.

**EXTENSIVE ANTI-CORROSION MEASURES** Special rust-resistant steels are used in the construction of the cowl, floor, side body panels, rear wheelhousings, ra-



diator support panel, and other sheet metal parts including hood inner panel for '83. Many chassis parts have anti-corrosion coatings • Body from the cowl to the rear is treated with electrically charged Elpo Dip primer to thoroughly coat the metal, including hard-to-reach inner and outer surfaces. • Special sealers are important —front-wheelhouse-to-frame seals, butyl rubber weatherstripping around doors and windows, sealing compounds at various joints. • Aluminum-wax

preservative applied to vulnerable inner areas provides added protection. • Tough acrylic enamel finish coat is sprayed on for a lustrous surface.

**1983 GMC THREE-YEAR PROTECTION-FROM CORROSION** limited warranty. Exhaust components are excluded. See your GMC Truck dealer for details about other limitations.

**GM CONTINUOUS PROTECTION PLAN.** An option that offers service pro-

tection in addition to that provided by GM's new vehicle limited warranty. Available only in the U.S. and Canada for 1983 model year. Ask your dealer.

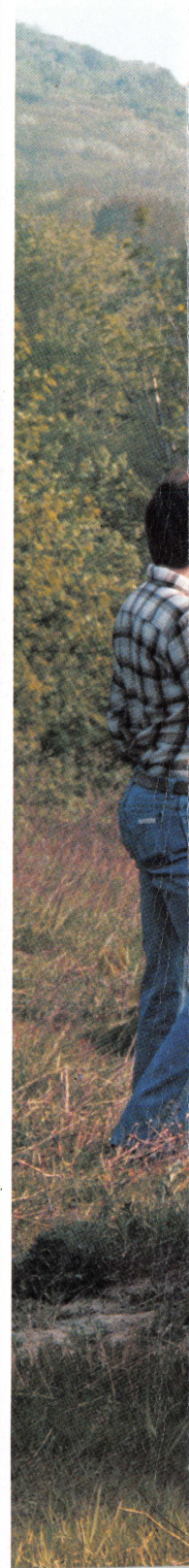
**GM POWER-PROTECTION-PLUS.** See your dealer for details and information about GM's 24-month/24,000-mile Power-Protection-Plus Limited Warranty. For diesel engines this limited warranty is 3 years/50,000 miles. Power-Protection-Plus is subject to a deductible after the first 12-months/12,000 miles.



# GMC JIMMY DIESEL



4-WD Full-Size GMC Jimmy Sierra Classic with diesel power. Shown with available equipment.



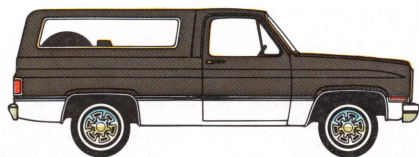


# HIGH MILEAGE . . . HIGH STYLE

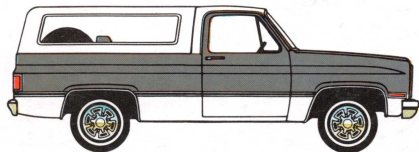


4-WD Sierra Classic Jimmy with standard removable hardtop. Shown with available equipment. Tires supplied by various tire manufacturers.

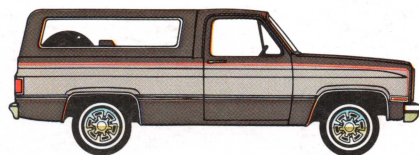




Available Special Two-Tone Scheme with Black Top



Available Special Two-Tone Scheme with White Top



Available Exterior Decor Package

## PAINT SCHEMES

**STANDARD SOLID COLORS:** Almond, Midnight Black, Light Blue Metallic, Midnight Blue, Light Bronze Metallic, Mahogany Metallic, Carmine Red, Silver Metallic, Frost White, Colonial Yellow

**SPECIAL AVAILABLE TWO-TONE SCHEME (ZY3)** Includes body side and rear moldings, bright wheel-opening moldings, bright side marker and tail lamp trim. Secondary color applied below moldings.

**AVAILABLE EXTERIOR DECOR PACKAGE (ZY5)** Choice of four two-tone color combinations. Includes molding and lamp trim in special two-tone scheme plus dual-tone tape striping applied to body sides above styling crease line and across the back of the truck. Also includes stand-up hood emblem on gas models. Secondary color applied on body sides and rear between striping and moldings.

**REMOVABLE HARDTOP** is Black or White with cab roof painted to match. Hardtop color is coordinated to paint scheme selected.

## DIMENSIONS

	4-WHEEL DRIVE
Wheelbase	106.5
Front Overhang	33.8
Rear Overhang	45.3
Front Tread	66.1
Rear Tread	63.0
Ground Clearance	7.0
Overall Height	73.8
Overall Length	185.6
Overall Width	79.6
Box Length — Floor (w/o Rear Seat)	77.0
Box Length — Upper	65.5
Box Width — Floor	72.0
— Tailgate Opening	65.0
— Between Wheel Housings	50.0
Box Depth	19.5

## TECHNICAL INFORMATION

MODEL TYPE		GASOLINE ENGINE	DIESEL ENGINE*
SERIES		K-1500 (4-WD)	
GVWR RANGE, LBS		6100	6100-6250
PAYLOAD RANGE, LBS		1810	1429-1579
ENGINE, LITER		5.0 V8/ESC†, 5.7 V8@	6.2 V8+
FRONT SUSPENSION	Type	Hypoid Driving Axle, Leaf Springs	
	Capacity, Lbs	3600	
FRONT SPRINGS	Std	1650	1850
	Avail	2250	2250
FRONT STABILIZER BAR		1.25" Dia	
REAR SUSPENSION	Axle Type	Semifloating, Two-Stage Leaf Springs	
	Axle Capacity, Lbs	3750	
REAR SPRINGS	Std	3750	
	Avail	—	
REAR AXLE RATIO	Std	2.73	3.08
	Avail	3.08, 3.73†	3.42, 3.73
SHOCK ABSORBERS	Std	25 mm	
	Avail	32 mm	
BRAKES, DISC/DRUM		Front Quad Shocks (four 25 mm front; two 32 mm rear)	
STEERING		Vacuum Power	Hydraulic Power
TRANSMISSION	Manual Std	Power	
	Auto Avail	4-Speed†§	—
TRANSFER CASE		4-Speed OD	4-Speed OD
		Part-time	
TIRES, RADIAL	Std	P215/75R-15‡	
	Avail	Larger Size Tubeless‡‡	
FUEL TANK, GALLONS	Std Cap	25	27
	Avail Cap	31	32
BATTERY	Std CCA	405	Dual 550
	Avail CCA	515	—
GENERATOR	Std Amp	37	66
	Avail Amp	66	—

\*Requires B3J diesel equipment  
†Not available in California

§Interim 1983

@California only

+Includes HD radiator with in-tank engine oil cooler plus dual exhaust system as part of B3J Diesel Equipment

‡10R15-LT/B required for diesel 6250-lb GVWR  
‡‡Except for diesel 6250-lb GVWR



**Official Truck  
of the XXIIIrd  
Olympiad  
Los Angeles  
1984**

The right is reserved to make changes at any time, without notice, in prices, colors, materials, equipment, specifications and models. Check with your GMC dealer for complete information.



# GMC TRUCKS

GENERAL MOTORS CORPORATION  
PONTIAC, MICHIGAN 48053